

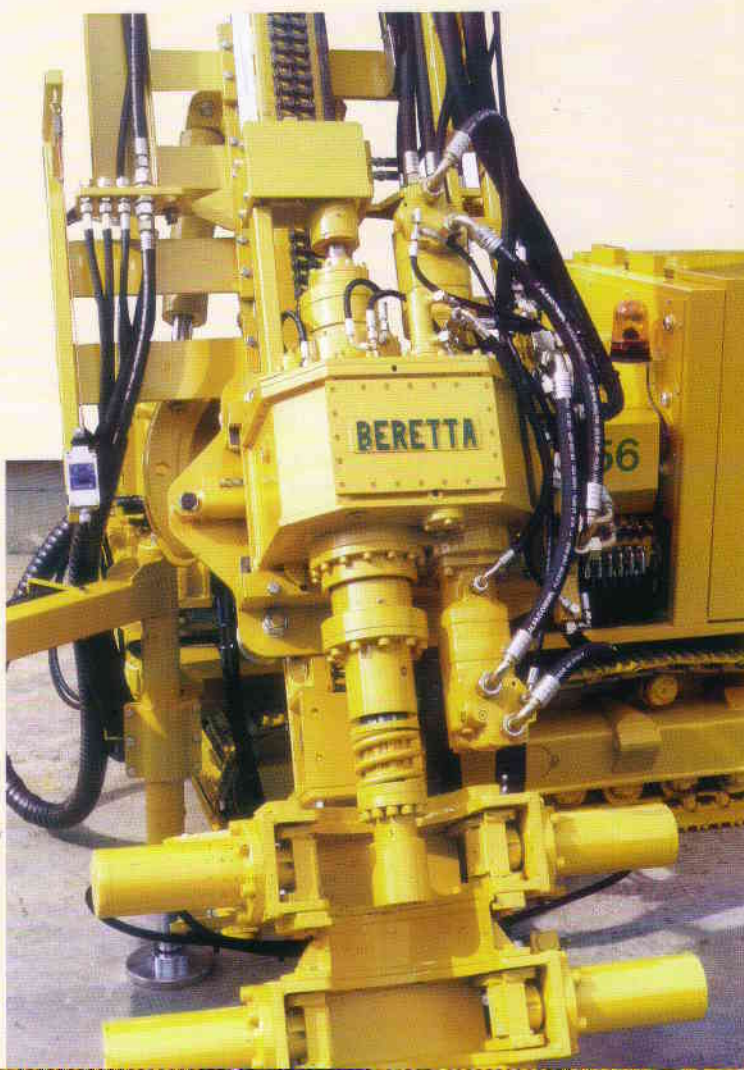
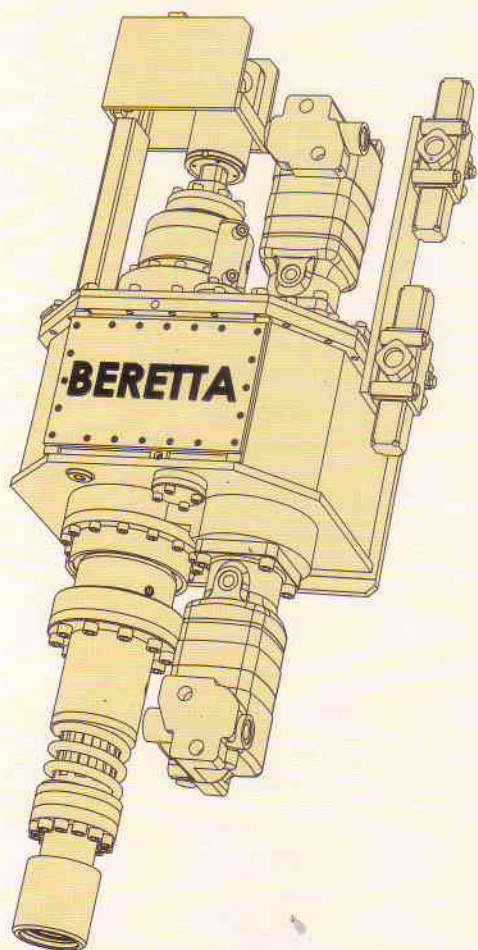


APPLICATIONS

Micropiles

Anchoring

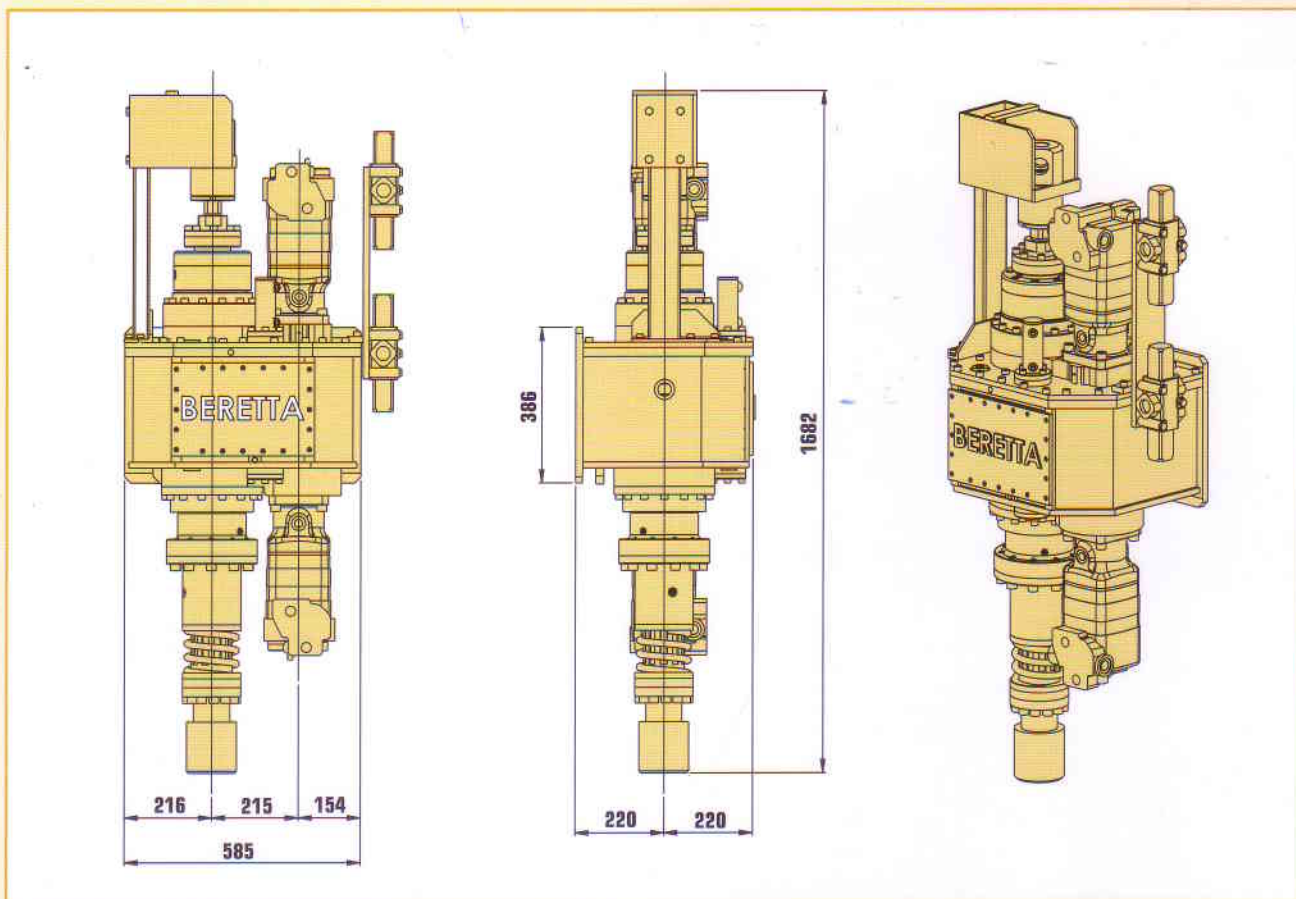
Water wells



150 5V

BERETTA®

Hydraulic Rotary Head for T151 - T152 - T157 - T159 - T159/M1



150 5V ROTARY HEAD - Technical data

TYPE	SPEED	TORQUE (daNm)	TORQUE (lb ft)	RPM (n/min)
A	1°	2005	14788	32
	2°	1002	7390	64
	3°	532	3924	120
	4°	266	1962	240
	5°	93	686	432
B	1°	1440	10621	44
	2°	720	5310	88
	3°	382	2817	167
	4°	191	1409	333
	5°	58	428	600
C	1°	1002	7390	51
	2°	532	3924	102
	3°	266	1962	194
	4°	133	981	388
	5°	46	339	667
Max oil feed:	160 l/min	42,3 gal/min		
Max working pressure:	230 Bar	3271 PSI		
Inside diameter for jet grouting:	92 mm	3,62 in		
TOTAL WEIGHT:	580 kg	1279 lb		
Rotary head for:	T151 - T152 - T157 - T159/M1			

BERETTA migliora costantemente i suoi prodotti riservandosi il diritto di apportare qualsiasi modifica senza preavviso nè responsabilità
 BERETTA continuously improves its products reserving the right to modify data without advance notice decling any responsibility
 Revisione Depliant N. 3 - Aprile 2011 / Brochure revision N. 3 - April 2011



Beretta Alfredo s.r.l.

20842 BESANA IN BRIANZA (MB) - ITALIA - Via Vignareto, 10
 Tel. +39 (0)362 99.53.80 r.a. - Fax +39 (0)362 99.57.08
 www.berettaalfredo.it - e.mail: info@berettaalfredo.it



ISO 9001 - Cert. n. 1323

