

APPLICATIONS

Test holes

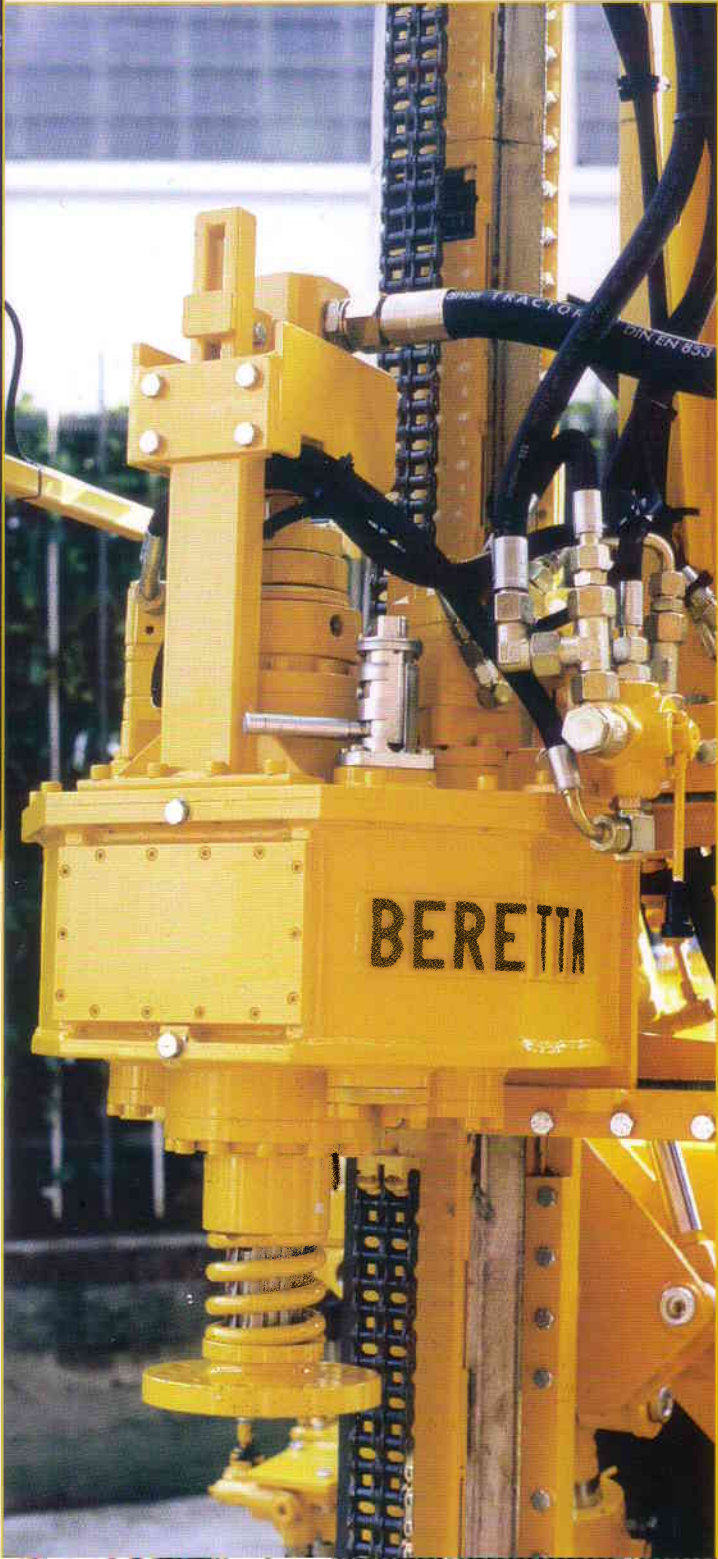
Micropiles

Anchoring

Jet grouting

Water wells

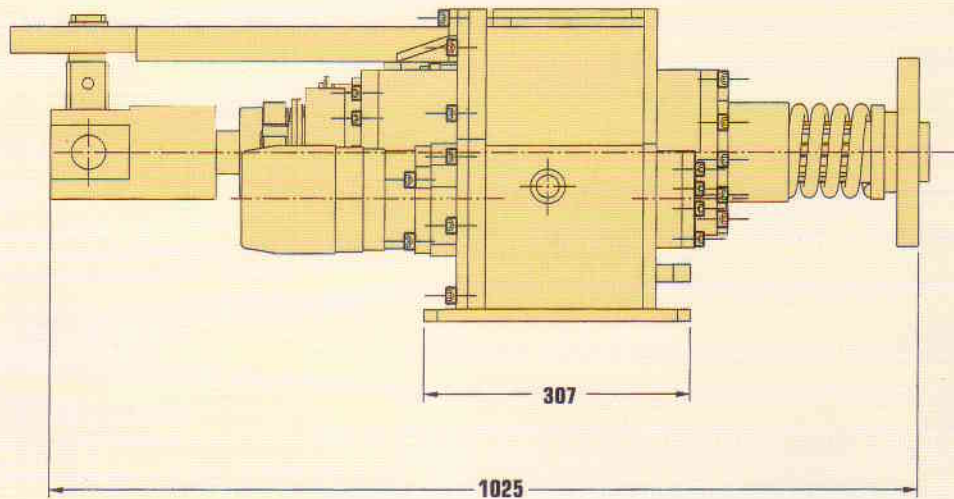
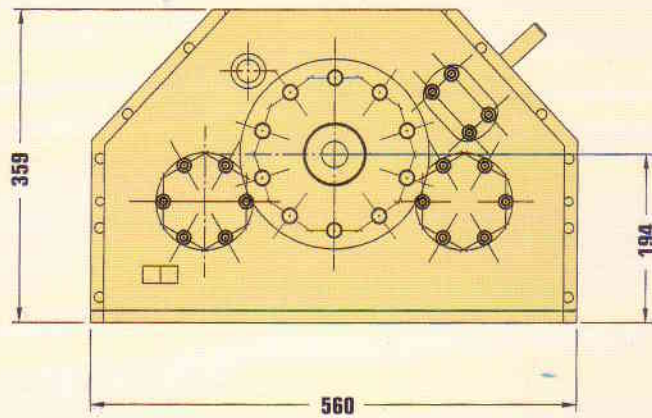
Restoration work



41-4V

BERETTA®

Hydraulic Rotary Head for T41 - T43 - T44 - T46 - T49



Weight = **286 Kg - 631 lb**

Inside diameter for jet grouting = **62 mm - 2,44 in**

Max oil Feed = **75 l/min - 19,8 gal/min** / Max working pressure = **210 Bar - 2987 PSI**

Rotary head for: **T41 - T43 - T44 - T46 - T49 hydraulic drilling machine - Inside diameter for jet grouting 62 mm**

Technical data	SPEED TORQUE (daNm) TORQUE (lb ft) RPM (n/min)			
B	1°	251	1819	98
	2°	126	913	198
	3°	62	449	400
	4°	31	225	800
C	1°	315	2283	78
	2°	157	1138	158
	3°	76	551	320
	4°	38	275	640
D	1°	403	2920	62
	2°	201	1457	124
	3°	99	717	250
	4°	49	355	500

Technical data	SPEED TORQUE (daNm) TORQUE (lb ft) RPM (n/min)			
E	1°	504	3652	50
	2°	252	1826	100
	3°	124	899	200
	4°	62	449	400
F	1°	573	4152	39
	2°	286	2072	78
	3°	141	1022	160
	4°	70	507	320
G	1°	650	4710	32
	2°	325	2355	63
	3°	160	1159	127
	4°	80	580	253

BERETTA migliora costantemente i suoi prodotti riservandosi il diritto di apportare qualsiasi modifica senza preavviso nè responsabilità
 BERETTA continuously improves its products reserving the right to modify data without advance notice decling any responsibility
 Revisione Depliant N. 4 - Aprile 2008 / Brochure revision N. 4 - April 2008



Beretta Alfredo s.r.l.

20842 BESANA IN BRIANZA (MB) - ITALIA - Via Vignareto, 10
 Tel. +39 (0)362 99.53.80 r.a. - Fax +39 (0)362 99.57.08
 www.berettaalfredo.it - e.mail: info@berettaalfredo.it



ISO 9001 - Cert. n. 1323/0